

LIVE SIMPLE. LIVE HEALTHY. LIVE SOCIAL.

BASECAMP

RIGHT NEXT TO WHOLE FOODS MARKET **SHOPS & RESIDENCES** IN THE HEART OF COLORADO SKI COUNTRY

ESTABLISHED 2017



FRISCO, COLORADO | SUMMIT COUNTY

welcome
to Basecamp living

HOME

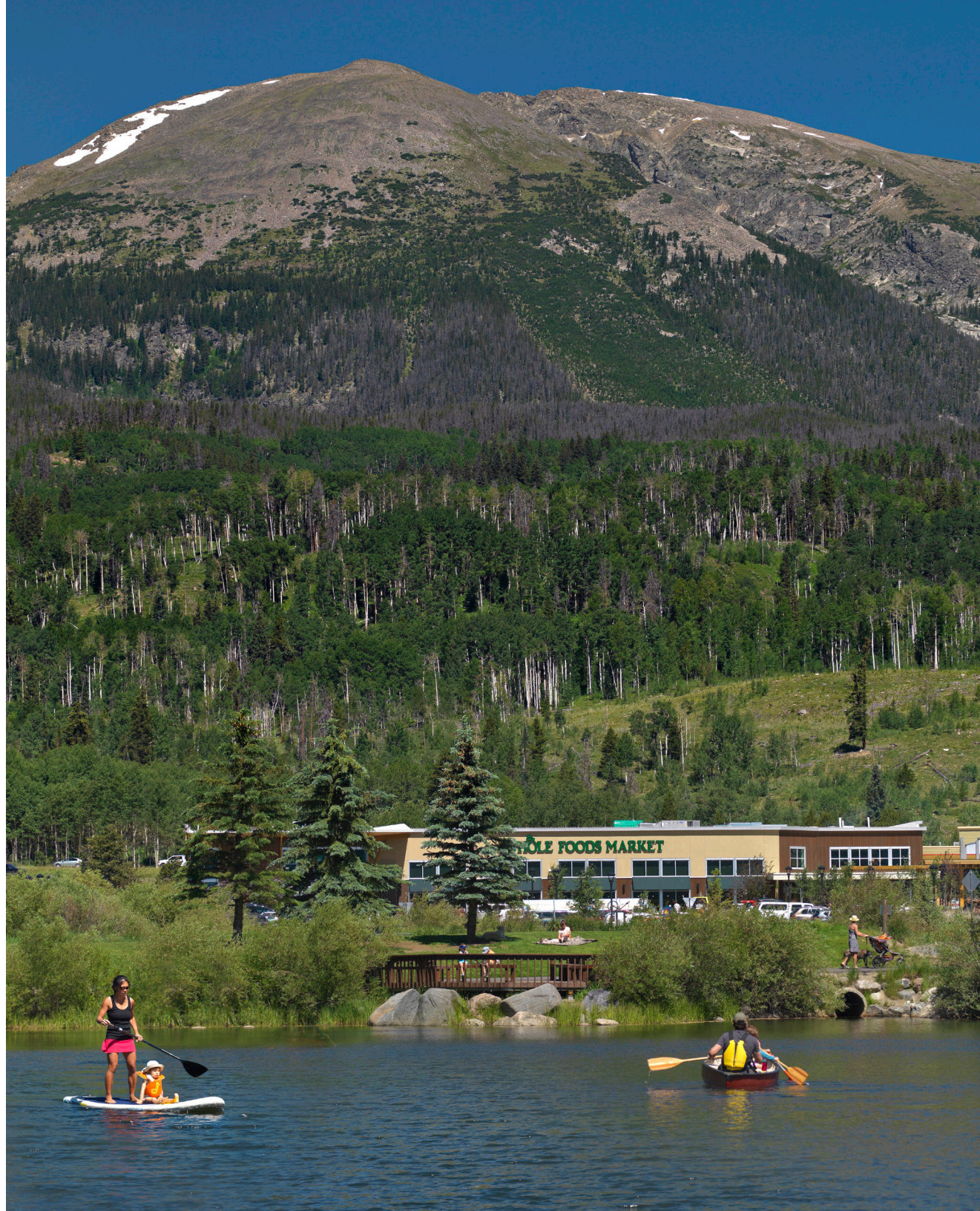
Be it ever so humble,

Home is more than just a place.

At **Basecamp Shops & Residences**,

Home is your urban retreat set
in the heart of Colorado ski country.
Sleek, modern micro-condominiums
in a stunning setting with a bevy of
amenities and world class recreation
in your back yard.

**HOME IS BASECAMP
SHOPS & RESIDENCES.**



LIVE SIMPLE

The Basecamp Micro-condos have mastered functionality in an undersized footprint. From ceiling to floor, every last cubic square inch is designed to maximize the owner's experience, resulting in an extraordinary space that has everything you need and nothing you don't. Plus, next door to the World's highest Transit Oriented Development.



the perfect lifestyle COMBO

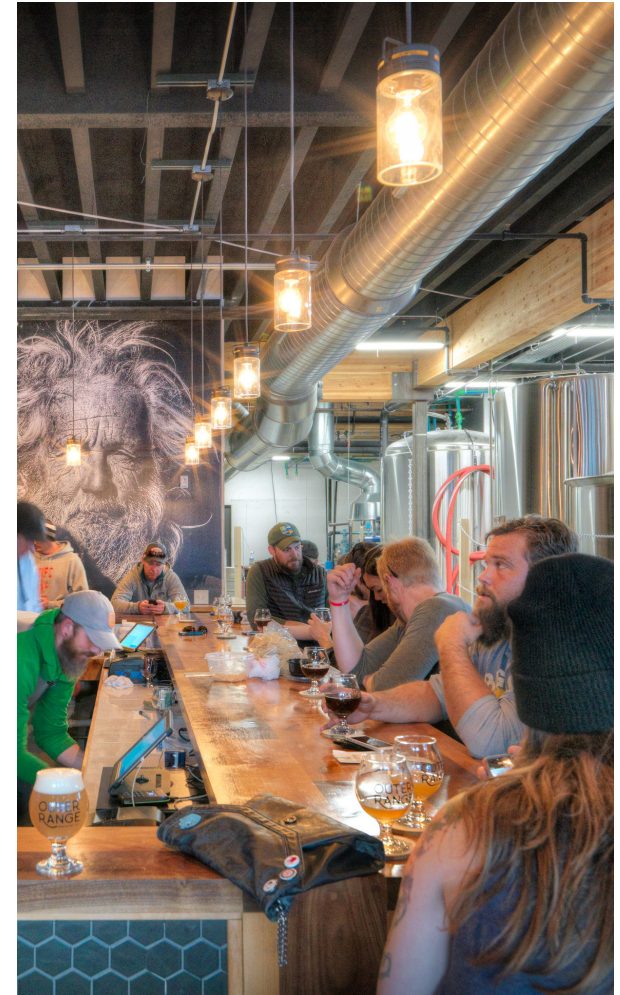
LIVE HEALTHY

Within walking distance to sailing on Lake Dillon, fly fishing at Ten Mile Creek or hiking at Eagles Nest Wilderness area, the Basecamp micro-condos offer nature and adventure out your front door.



LIVE SOCIAL

Very rarely is the perfect escape right outside your door. Just a few steps to enjoy lunch with a co-worker at Whole Foods Market, or gather with friends next door at Outer Range Brewery for a delicious IPA. Jump on the bus and enjoy a stroll down Frisco's main street for some dining or shopping. Or even access the Vail bike/recreational path and head up to Breckenridge for an afternoon adventure.



TYPE A

622 Square Feet

30'x13 Footprint

15' Living Room Ceiling Height

it's all in the
DETAILS

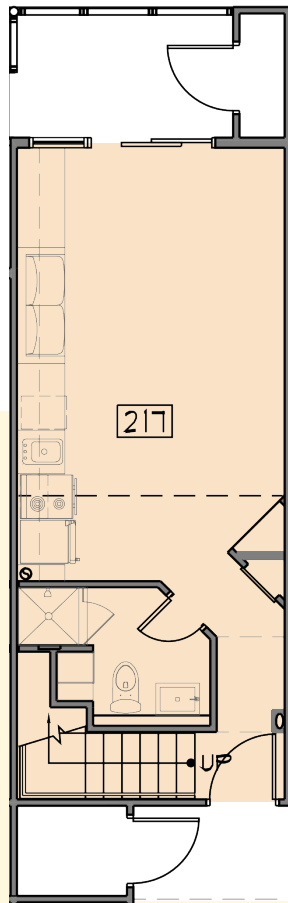
TYPE B

553 Square Feet

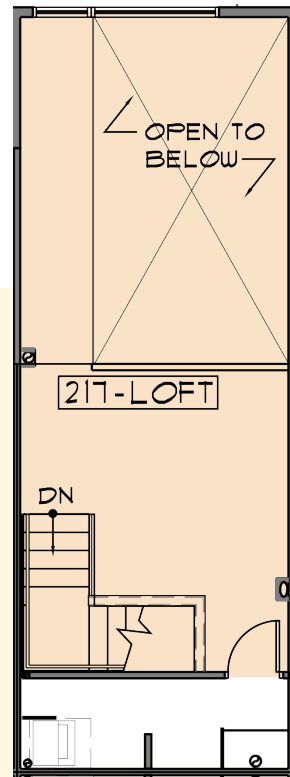
24'x13' Footprint

15' Living Room Ceiling Height

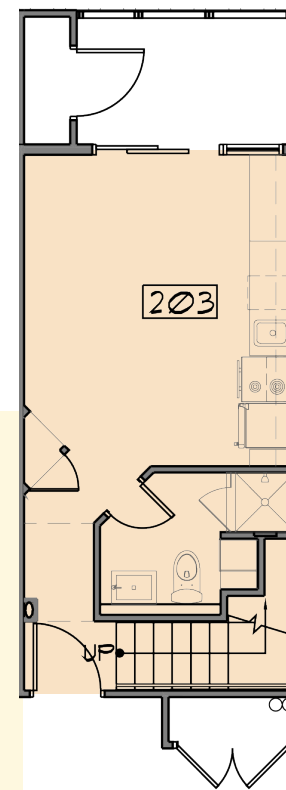
TYPE A, LOWER LEVEL



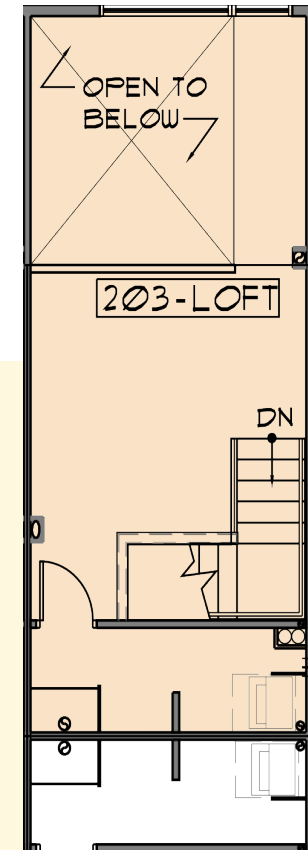
TYPE A, LOFT LEVEL



TYPE B, LOWER LEVEL



TYPE B, LOFT LEVEL



life inside the
**MICRO
CONDO**

A HOME FOR THE WAY YOU ACTUALLY LIVE

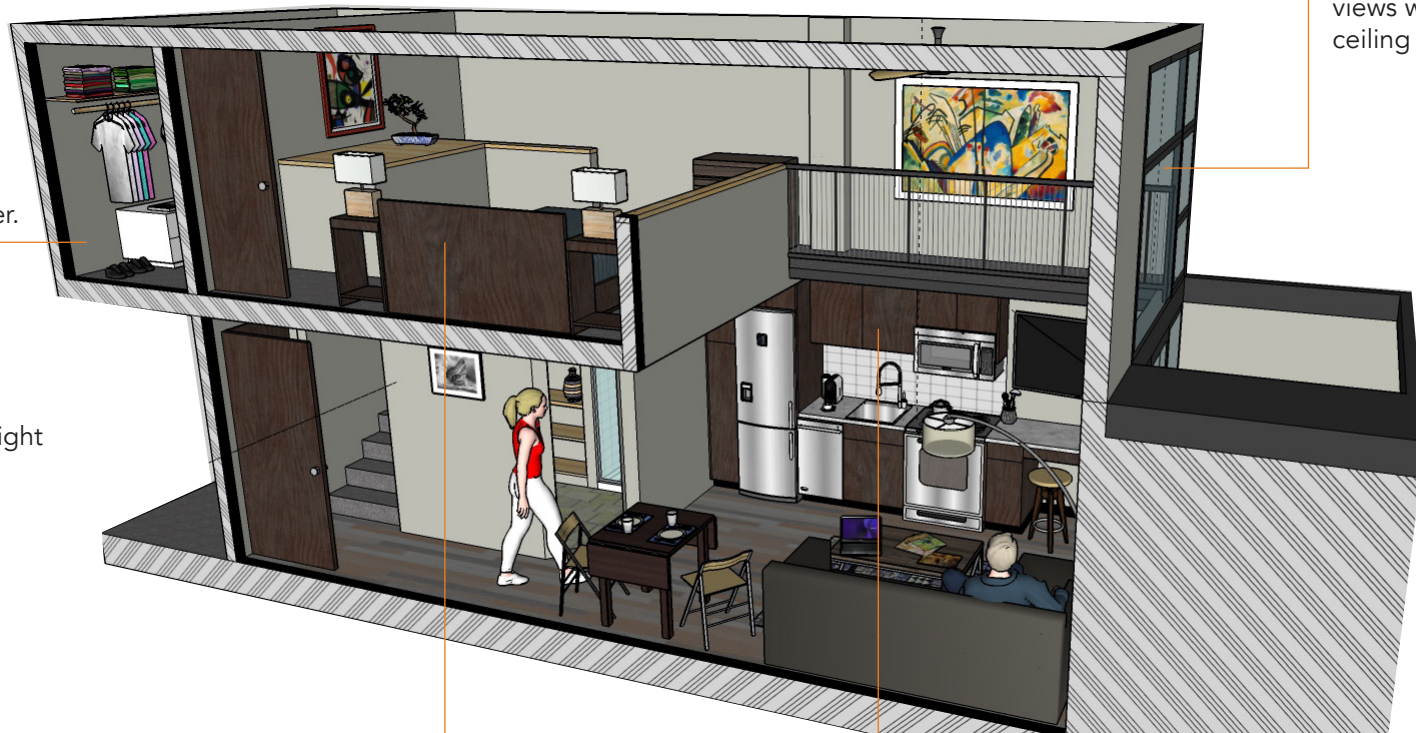
Imagine living your life in an exceptional small home that has everything you need, and nothing you don't. Here's what that looks like:

WALK-IN CLOSET

For ultimate organization and efficiency, complete with an outlet for a stacked washer dryer.

TALL CEILINGS

Ceiling height of 15 feet for open, bright living.



LARGE WINDOWS
Soak in the mountain views with floor to ceiling windows.

BEDROOM

The bedroom area is open in loft style to the living area.

KITCHEN

The kitchen is extremely functional and well organized.

EVERYTHING YOU NEED TO KNOW ...

Q. Is my condo on a ground lease?

A. Yes. WFM and all the other buildings at Basecamp, have been constructed on a ground lease. Similarly, the Basecamp Shops & Residences Association, Inc. ("HOA") will lease the ground upon which the S&R are being constructed. The HOA's ground lease is for 99 years.

Q. Are pets allowed?

A. Yes, up to two household pets per unit.

Q. Can my business purchase a "locals" micro-condo and rent it to an employee?

A. Yes, however no short term rentals allowed. Must be 6 months or longer.

Q. What does the HOA include?

A. Includes ground lease, water/sewer, trash/recycling, common area building maintenance, landscaping, snow removal, exterior maintenance, exterior insurance and local management.

Q. When can we expect to move in?

A. Fall 2018

q u e s t i o n s ANSWERS

YOU'VE GOT QUESTIONS

We get it - buying a home is a huge commitment. We're here to make it as seamless as possible. If you still have questions once you've read through our Q&A, give us a call. We're here to help and we'd love to chat with you!



WE'VE GOT ANSWERS

Q. Are these units restricted to locals?

A. The "Locals" units are available for those who work in Summit County. Available to owner occupy, or as an investment opportunity and rent to a local. * (review Covenant for details) The "Market" units are available to anyone with no restrictions.

Q. How much earnest money do I have to put down?

A. \$2500 for Restricted units and \$17,500 for Market units

Q. Is there storage?

A. In addition to a 2x6 private storage closet on the deck, there is a community ski locker/bike storage area on the lower level.

Q. What amenities are included?

A. All Basecamp businesses, the bike path, trail connections and the natural outdoors is all at your fingertips.

Q. Are garages available?

A. Yes. There are 10 garages available for an additional cost. Two parking permits for all other units.



BASECAMP

SHOPS & RESIDENCES

ESTABLISHED 2017

visit

basecamp-frisco.com/basecamp-shops-residences/
to find your future micro-condominium

INFO@BASECAMP-FRISCO.COM | + 970.485.2212